

QUALITY CHANGES THE WORLD

PRODUCT
SPECIFICATIONS



STC900T5

SANY TRUCK CRANE
90T LIFTING CAPACITY

90T汽车起重机



90 t



49.5 m



76.5 m

www.sanyglobal.com

VERSION WITH RETARDER AVAILABLE
缓速器版可售

LEFT HAND DRIVE AVAILABLE
左舵可售

V1.6

SANY TRUCK CRANE STC900T5 / 90T LIFTING CAPACITY



U shape large cross section 49.5m boom with 13t load capacity at full length, fixed jib 17.5m, 9.5m extension optional, leading in industry.

大截面 U 型主臂, 全伸臂长 49.5m, 全伸臂最大吊重 13t ;副臂长 17.5m, 可选 9.5m 延伸臂, 臂长及吊载能力行业领先。



Fixed CW 0.8t, two movable blocks 5t, 6t, additional 6t for option. With CW base support available, the crane can travel with 17.8t CW on board at low speed in short distance. CW assembly & disassembly realized by remote control, efficiency increased, crane setup time reduced.

固定配重 0.8t, 活动配重分别为 5t、6t, 可另选配一块 6t 活动配重 ;带配重支座, 可带 17.8t 配重短距离低速转场。
活动配重可遥控安装及拆卸, 提高拆装效率, 减少收支车时间。



Remark :this illustration is crane with 17.8t counterweight (optional) for jobsite traveling.

备注 :此图为带 17.8t 配重工地转场状态。



Globally well-known brand oil pump and motor, the min. winch single rope speed1.5m/min, the min. stable slewing speed<math><0.1^\circ/\text{s}</math>, easy to realize high precision mm-level operation.

All new double pump intelligent flow distribution system shared by all T-series models lifts combined motion stability by over 50%. Flow confluence for faster telescoping, shunt for more stable luffing.

Electrical control saves energy by 15% during loading, raises heavy load efficiency by 30%.

国际知名品牌油泵马达, 卷扬单绳最低速度小于 1.5m/min , 回转最低稳定小于 $0.1^\circ/\text{s}$, 轻松实现毫米级吊装。

全新开发双泵智能流量分配系统, 变幅独立, 伸臂合流, 复合动作平稳性提升 50% 以上。

电控系统相比液控系统, 上车吊载综合节能 15%, 重载作业效率提升 30%。



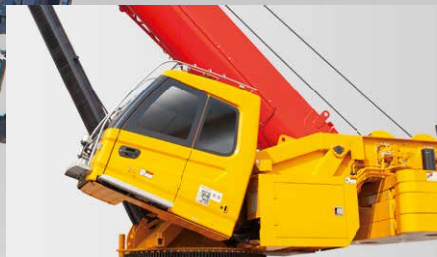
Model **STC900T5** | SERIES

SANY TRUCK CRANE STC900T5 / 90T LIFTING CAPACITY



20° tiltable operator's cab
Full vision
Front & side footboards
Adjustable seat slide 150mm inclination 140°
Winch display screen

20° 可仰操纵室
全线无遮挡视野
前、侧脚踏板
可调座椅 前后移动 150mm 可仰 140°
卷扬监控大屏



LMI display screen
Membrane switch buttons
7 vent A/C
Smartphone support
Cupholder
Rear storage shelf

力限器显示屏
薄膜开关按键
7通道空调送风系统
手机支架
水杯支架
后置物平台



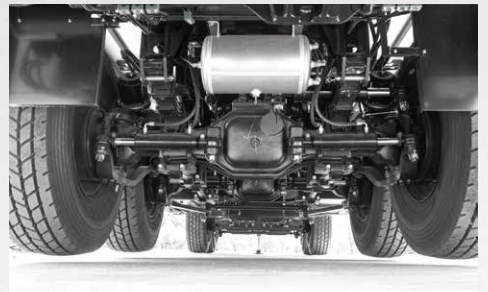
G Class, ground clearance 340mm, approach / departure angle 19/15°, all axle steering, outstanding travel flexibility. All new 2.8m width chassis with lower front outriggers and high strength box type frame featuring higher torsion resistance.

DF CUMMINS large torque engine, FAST 10-speed gearbox with emergency steering, providing strong power while consuming less fuel.

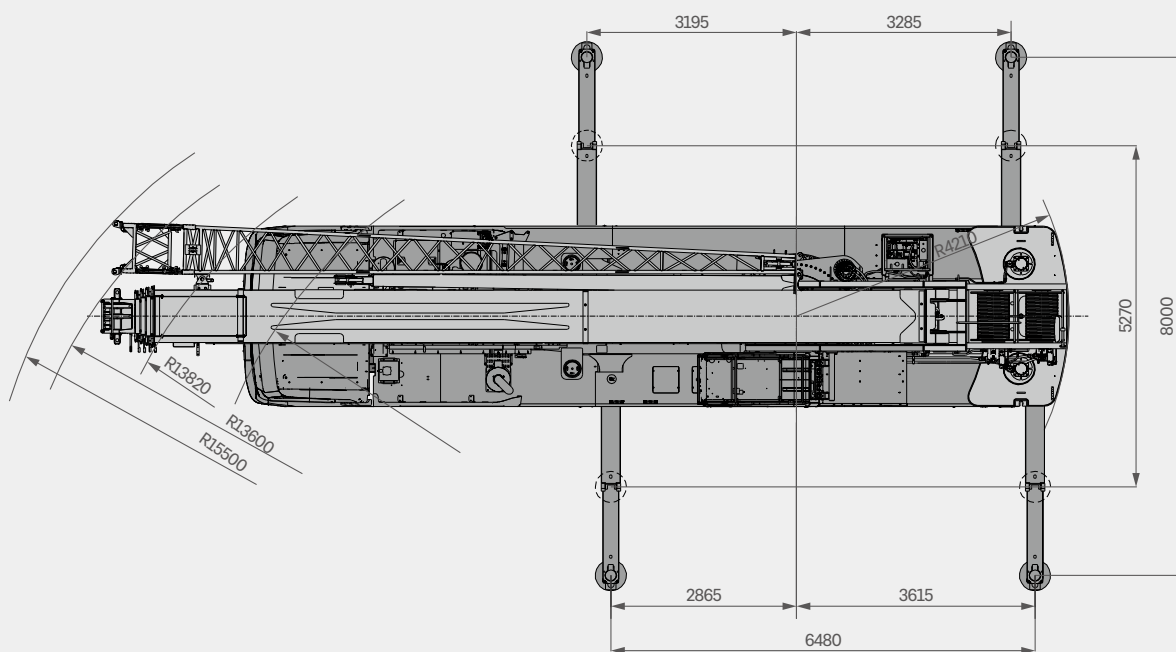
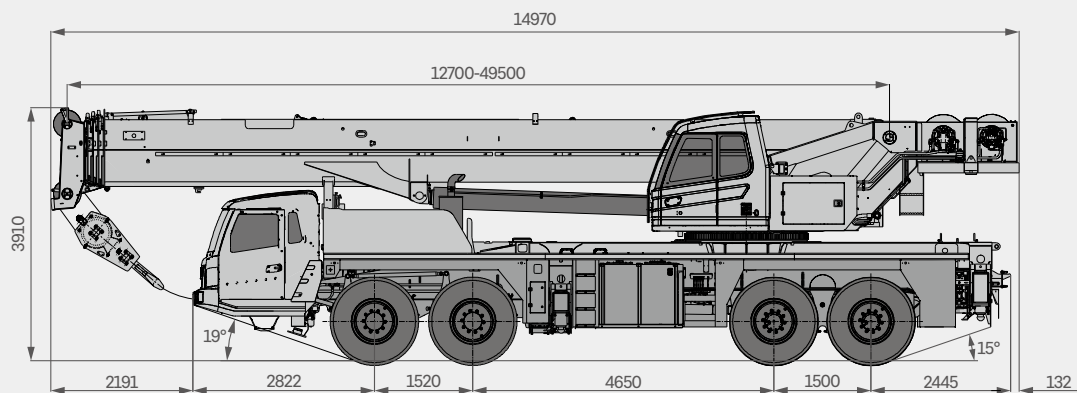
Front axles equipped with big size disc brake, braking torque raised by 25%, less heat generated, making the brake system more reliable.

G 类车, 离地间隙 340mm, 接近 / 离去角 19/15°, 全桥转向, 通过性好。全新 2.8m 宽底盘, 低前置 H 型活动支腿 + 高强度矩形截面车架, 提升吊载抗扭抗弯能力。

东康大扭矩发动机、法士特 10 档带应急转向变速箱, 动力足, 油耗少。前桥配置全新大尺寸盘式制动器, 制动力矩加大 25%, 发热少, 更可靠。



Overall Dimensions 整机尺寸图



Technical Specification 主要性能参数

类型 CATEGORY	项目 ITEM	单位 UNIT	参数 VALUE	
额定起重量 CAPACITY	Max. lifting capacity 最大起重量	t	90	
重量参数 WEIGHT	Gross weight 整机总质量	kg	45000 (without jib 不带副臂)	
发动机参数 POWER	Engine model 发动机型号 (排放标准)	-	DF CUMMINS ISLe375 30 (Euro III) 东风康明斯 ISLe375 30(欧 III)	
	Max. engine power 发动机最大功率	kW/rpm	275/2100	
	Max. engine torque 发动机最大输出扭矩	N·m/rpm	1550/1200	
尺寸参数 DIMENSIONS	Overall length 整机全长	mm	14970	
	Overall width 整机全宽	mm	2800	
	Overall height 整机全高	mm	3910	
行驶参数 TRAVEL	Max. travel speed 最高行驶速度	km/h	80	
	Steering radius 转弯半径	Min.steering radius 最小转弯半径	m	10
		Min.steering radius of boom tip 臂头最小转弯半径	m	13.6
	Wheel formula 车轮模式	-	8×4×8	
	Min.ground clearance 最小离地间隙	mm	340	
	Approach angle 接近角	°	19	
	Departure angle 离去角	°	15	
	Max.gradeability 最大爬坡度	-	45%	
	Fuel consumption per 100km 每 100 公里油耗	L	45	
	Working temperature range 使用温度区间	°C	-25~+45	
主要性能参数 MAIN PERFORMANCE	Min.rated lifting radius 最小额定幅度	m	2.5	
	Tail slewing radius 转台尾部回转半径	m	4.21	
	Boom sections (Qty.) 臂节数	-	5	
	Boom shape 臂形状	-	U shape U 型	
	Max.lifting moment 最大起重力矩	Basic boom 基本臂	kN·m	2989
		Full-extension boom 全伸主臂	kN·m	1725
		Full-extension boom + jib 全伸主臂 + 副臂	kN·m	941.3
		Full-extension boom + extension + jib 全伸主臂 + 延伸臂 + 副臂	kN·m	523.6 (○)
	Boom length 臂长	Basic boom 基本臂	m	12.7
		Full-extension boom 全伸主臂	m	49.5
		Full-extension boom + jib 全伸主臂 + 副臂	m	67
		Full-extension boom + extension + jib 全伸主臂 + 延伸臂 + 副臂	m	76.5 (○)
	Max.lifting height 最大起重高度	Basic boom 基本臂	m	13.2
Full-extension boom 全伸主臂		m	50	
Full-extension boom + jib 全伸主臂 + 副臂		m	67	
Full-extension boom + extension + jib 全伸主臂 + 延伸臂 + 副臂		m	76.5 (○)	
Outrigger span (Longitudinal × Transverse) 支腿跨距 (纵 × 横)	m	6.48 × 8		
Jib offset 副臂安装角度	°	0, 15, 30		
空调 AIRCONDITIONER	In operator's cab 上车空调	-	Heating & Cooling 制冷、制热	
	In driver's cab 下车空调	-	Heating & Cooling 制冷、制热	

○ Optional 选配

Technical Parameters 主要参数表



Axle Load 轴荷

Axle 轴	1	2	3	4	Gross weight 总重量
Axle load 轴荷 /t	11.2	11.2	11.3	11.3	45
Remark 备注	Without jib 不带副臂				



Hook 吊钩

Rated load 额载 /t	Number of sheaves 滑轮数量	Rope rate 倍率	Hook weight 吊钩重量 /kg
55 ●	4	8	595
7.5 ●	0	1	150
100 ○	7	14	1030
75 ○	6	12	800
75(double-eye) ○	5	10	735

● Standard 标配 ○ Optional 选配



Operations 主要动作参数

Item 项目	Max. single rope lifting speed (empty load) 单绳速度 (空载)	Rope diameter/length 钢丝绳直径 / 长度	Max. single line pull 最大单绳拉力
Main winch 主卷扬	130m/min	20mm/215m	6.33t
Auxiliary winch 副卷扬	130m/min	20mm/145m	6.33t
Slewing speed 回转速度	0-1.7r/min		
Full luffing up/down time of boom 主臂起落幅时间	60s/90s		
Full extension/retraction time of boom 主臂伸缩时间	125s/140s		
Outrigger jack 垂直支腿	Retraction 收	30s	
	Extension 放	30s	
Outrigger beam 水平支腿	Retraction 收	20s	
	Extension 放	20s	

Crane Introduction 整机介绍

Carrier 下车

Driver's cab 驾驶室

- Self-developed integral steel structure cab in ergonomic design, featuring vibration and external noise isolation.
- The cab is furnished in concept of convenience, safety, and comfort with pneumatic seats, seat belt, adjustable steering wheel, large rearview mirror, seat with headrest, demister, HVAC, 7" multimedia terminal, full set of controls and panels.
- 自主开发全宽钢整体式钢结构驾驶室，采用人体工程学原理设计，减震性和封闭性优良。
- 配备气动悬置的驾驶室与副驾座、三点安全带、可调整式的转向盘、大视野后视镜、配有头枕的舒适驾驶椅、防雾扇、冷暖空调、7寸多媒体娱乐终端等装备，控制仪器和仪表齐全。
- 更加舒适、安全、人性化。

Carrier frame 车架

- Designed and manufactured by Sany, the box-type structure is expanded in height and length, with its rigidity increased by 30%, featuring increased bearing capacity.
- 三一设计、制造，采用矩形截面结构，车架加高加宽，相较槽型车架，刚性提升 30%，承载能力得到大幅提升。

Engine 发动机

- Model: DF Cummins inline six-cylinder diesel engine with watercooler and inter cooler.
- Emission standard: Euro III.
- Fuel reservoir capacity: 400L.
- 型式：东风康明斯，直列六缸、水冷却、增压中冷、柴油发动机。
- 排放标准：欧 III。
- 燃料箱有效容积：400L。

Transmission 变速箱

- 10-speed manual transmission with synchronizer, large speed ratio range, adaptable to slope climbing and high-speed traveling.
- 手动带同步器变速箱，10 档，速比范围大，既可满足低速场地爬坡行驶，又可满足高速行驶。

Transmission shaft 传动轴

- Optimized layout, higher torque output via contrate gear connecting transmission shaft cardan.
- 优化的传动轴布置，传动轴传动平稳、可靠。最优化力传输，采用端面齿联结传动轴，传递扭矩大。

Axle 车桥

- All axles are steered; axles 3, 4 are drive axles with built-in differential lock, realizing tougher ability to rough-terrain travelling. Two-stage reducer gear and smaller sized axle bags make it more flexible. Press welding process strengthens the axle cover.
- 1、2、3、4 轴为转向轴，3、4 轴为驱动轴，驱动轴内置轴间和轮间差速器锁，使车辆有更强的脱困能力；双级减速，桥包体积小，使车辆有更好的通过性；冲焊桥壳工艺，承载能力更强。

Suspension system 悬挂

- Front suspension is realized by independent leaf spring, and rear rubber. With leaf spring verified by 100,000 cycling fatigue tests, high strength and ride comfort are out of question.
- 前轴采用独立式钢板弹簧，中后轴采用摆动支架式钢板弹簧平衡悬架系统；板簧经过超过 10 万次的疲劳试验，同时优化前后板簧的性能参数，保证强度的同时兼顾乘坐的舒适性。

Steering 转向系统

- All axles are steered mechanically with large flow gearbox and hydro booster. Steering resistance decreased and operation made easier.
- 1 轴+2 轴+3 轴+4 轴采用液压助力机械转向，采用大流量转向器+转向助力油缸，大大减小转向阻力，转向更轻松。

Tires 轮胎

- Radial tires sized 385/95R25, common choice for heavy-duty trucks.
- 子午线轮胎，385/95R25，广泛适用于重型汽车，通用性强。

Wheel formula 车轮模式

- 8 × 4 × 8

Outrigger 支腿

- H-type welded by fine grain high strength steel, four point support, easy to operate. Outrigger beam hydraulically telescoping, jack telescoping protected by two-way pilot controlled valve.
- H 型支腿 4 点支撑，易操作、稳定性强；采用细晶粒高强度钢板材料，一、二级支腿全液压横向伸缩。支腿垂直油缸采用双向液压锁进行安全保护。

Brake 制动系统

- Air servo functions on all wheels with dual circuit system.
- The braking system includes service brake & parking brake & emergency brake & assisting brake & retarder brake (version with retarder).
- Service brake: air servo, dual circuit split; wedge brake and double air chambers functioning on front axles.
- Parking brake: functioning at axles 3 and 4 by spring loaded air chamber.
- Emergency brake: performed by accumulator releasing pressure.
- Assisting brake: engine exhaust brake, safety assured when driving down long slopes.
- 所有车轮均用空气伺服制动器，双回路制动系统，发动机带排气制动。
- 制动系统包括行车制动、驻车制动、应急制动和辅助制动及缓速器制动（缓速器版本）。
- 行车制动采用双回路制动系统，所有车轮均用空气伺服制动器，前桥采用模式制动器+双气室，制动能力更强。
- 驻车制动是通过气室内弹簧作用在第三、四桥上。
- 应急制动由蓄能器储能断气制动兼做应急制动。
- 辅助制动为排气制动，保证在下长坡时的制动安全，保证行车的安全可靠。

Electrical system 电气系统

- 2*12V maintenance-free battery. CAN instrument, data integration between superstructure and chassis.
- 2 × 12V 免维护蓄电池；总线控制系统，可实现上下车信息交互。

Crane Introduction 整机介绍

Operator's cab 操纵室

- The cab is designed 0°~20° tiltable in ergonomic concept with deep consideration of convenience, safety, and comfort. Corrosion resistant bodywork with electric side step and softened interior trim. The skylight, adjustable seat, seven vent air conditioning, and electric windshield wiper make working on the crane more comfortable.
- Multi-dimensionally adjustable 10" LMI display integrates data with central console, ensuring that operation conditions are well monitored without blind spot.
- 三一自主研发, 可 0-20° 可仰, 配置电控伸缩踏板, 采用安全玻璃, 耐腐蚀钢板, 配置全覆盖软化内饰、全景式天窗、可调式座椅等人性化设计, 配有加大冷暖空调、7 通道送风系统、电动雨刮器, 操作更舒适、轻松; 配置 6 向可调角度 10 英寸显示屏, 实现主控台与操作显示屏系统有机结合, 使吊装作业的全部工况数据一目了然。

Boom & telescoping system 伸缩臂架系统

- Five sections of U shape cross section welded by high strength structural steel. Telescoping is realized by two cylinders with rope arranger.
- 49.5m boom for max. lifting height 50m, 17.5m jib for max. height 67m.
- 五节臂, 全伸臂长 49.5m, 副臂 17.5m, 主臂全伸起升高度 50m, 带副臂最大起升高度 67m。由高强度焊接结构钢制成, U 形截面, 双缸 + 绳排伸缩方式

Hoist 起升系统

- Efficient and energy saving speed regulation is realized via double variables of pump and motor. Normally closed type winch brake, winch balance valve coupled with exclusive anti-slip tech contribute to smoother hoisting.
- 泵、马达双变量调速, 高效节能。常闭式卷扬制动器, 卷扬平衡阀与独特的防溜钩技术完美结合, 重物起落平稳。

Luffing system 变幅系统

- Passive luffing down with electro proportional balance valve, reducing energy cost. One luffing cylinder with hinge positioned to the front, making motion easier and boom stress optimized. Luffing angle: -1.5°~80°.
- 自重落幅, 更加节能。采用单根油缸, 前铰支布置, 变幅更省力且起重臂受力得到改善; 采用电比例控制平衡阀。变幅角度: -1.5°~80°。

Hydraulics 液压系统

- The all new smart double pump flow system lifts maneuverability of combined motions by 50%. The boom can luff at shunting mode and telescope at confluence mode.
- Load sensing variable piston pump can control flow in high precision, reducing energy loss significantly.
- Electrically controlled valve functions flow compensation and load sensing control, securing stable control over single and combined motions.
- Electronically controlled variable motor for winch is of highly efficiency, stability and low noise.
- 采用全新开发双泵智能流量系统, 变幅独立, 伸臂合流, 复合动作操控性提升 50% 以上。
- 采用进口负载敏感变量柱塞泵, 能实时调节油泵排量, 实现高精度的流量控制, 极大的降低能量损耗。
- 电控主阀具备流量补偿、负载反馈控制功能, 能在各种工况下, 轻松实现单个动作和组合动作的稳定控制。
- 卷扬采用电控变量马达, 高速效率高, 低速稳定噪音小。

Slewing 回转系统

- Free swing available. Balance valve is fitted for smooth start and stop. Inching motion performance sees high precision.
- 带集成回转缓冲阀, 具有自由滑转功能, 回转启动和控制平稳, 微动性卓越。

Control system 控制系统

- CAN-BUS instrument: integral electrical system control. Get the data any time and drive easily. Engine fault reminder available for convenient troubleshooting.
- LMI: smart load moment indicator providing all-round protection.
- Color LMI display: main parameters of working conditions are displayed clearly. I/O and maintenance display is provided for your quick mastering of whole machine conditions.
- Fault self-diagnosis: reliable functioning of the crane is guaranteed by pre-troubleshooting of electric system, hydraulics, chassis (for major safety malfunctioning), engine and transmission.
- 总线仪表: 采用集成一体智能控制电气系统的总线仪表, 可随时掌控行驶参数, 驾乘轻松; 同时, 拥有发动机故障提示功能, 维修排故方便、快捷。
- 力矩限制器: 采用高度智能力矩限制器系统, 全方位保护吊载作业, 确保操作精准、平稳、舒适。
- 上车采用彩色显示屏, 基本界面上显示有臂长、仰角、工作幅度、倍率大小、配重组合、发动机转速、吊钩选择等, 丰富易懂, 还增设有 I/O 界面, 检修界面等多项功能, 能快速反映整车系统的工作状况。
- 故障自诊断系统, 利用故障诊断系统对上车电气、液压力作、底盘 (针对重大安全故障)、发动机及变速箱等故障进行检测, 以保证起重机可靠工作。

Counterweight 配重

- Counterweight features 5 combinations: 0.8t, 5.8t, 6.8t, 11.8t, optional 17.8t, satisfying various demands and giving full play to the structural advantage. CW assembly and disassembly controlled by remote device.
- 组合式可变平衡重。0.8t、5.8t、6.8t、11.8t、17.8t (选配) 共 5 种组合方式, 可满足不同工况的需求, 最大限度发挥结构件性能, 可遥控拆卸及安装, 微动性好。

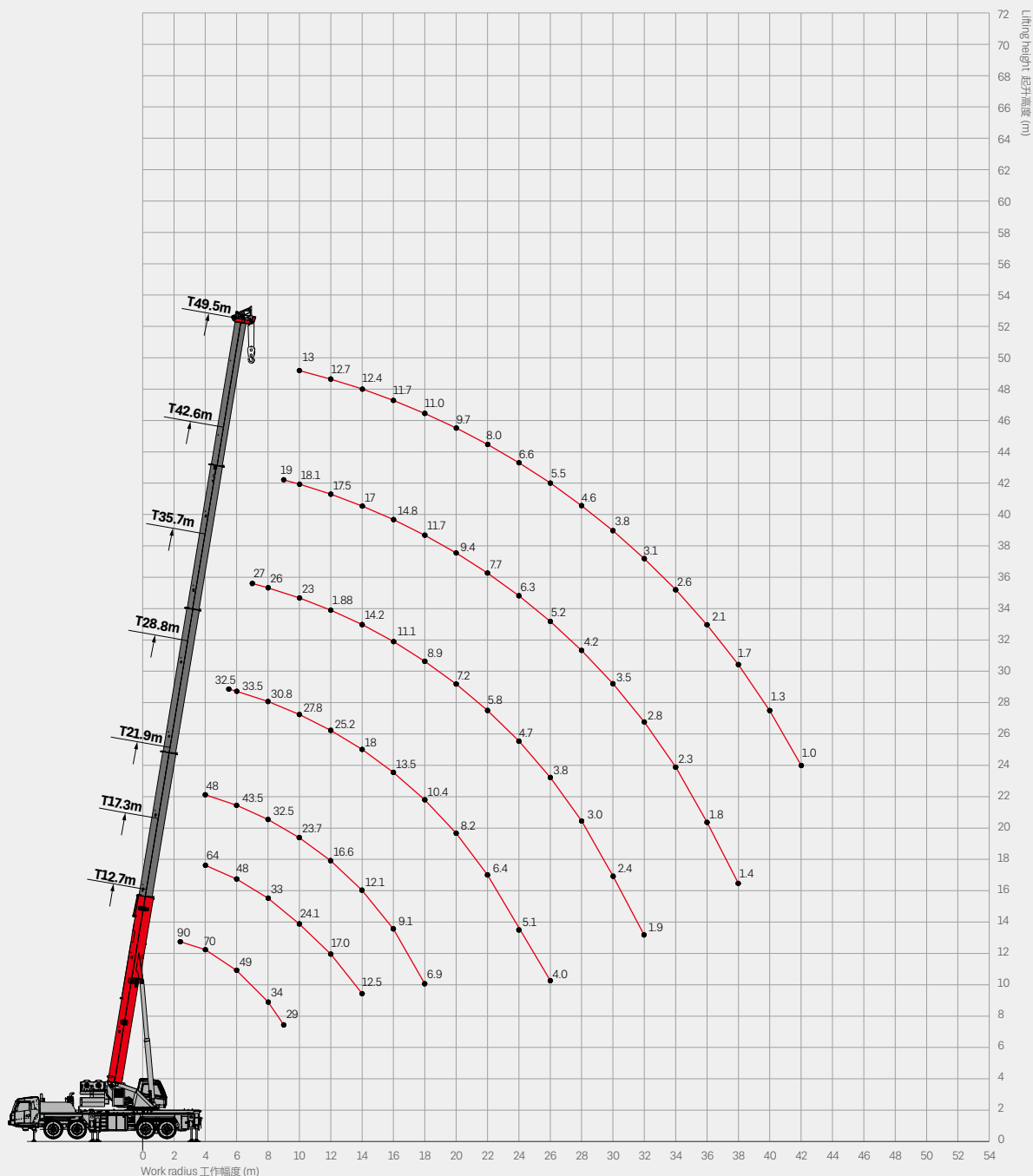
Safety equipment 安全装置

- Self-developed LMI. Load accuracy is maintained within $\pm 3\%$ via empty load calibration. System alarm is triggered before overload occurs.
- Hydraulic balance valve, relief valve, and two-way pilot-controlled valve ensure hydro system reliability.
- Three-circle protector and height limit switch are equipped for main and aux. winches to avoid over hoist down or up. Crane tipover is strictly prevented.
- Length & angle sensors, pressure sensors are fitted to display operation dynamics. Motion of risks are cut off automatically with buzzer alarming.
- 力矩限制器: 采用分析力学方法, 建立了基于吊重力学模型的力矩限制器计算系统, 通过在线空载标定, 额定吊重精度达到 $\pm 3\%$, 全方位保护吊载作业; 超载作业时, 系统自动报警提示, 为操纵作业提供安全保障。
- 液压系统配置液压平衡阀、溢流阀、双向液压锁等元件, 实现液压系统稳定可靠。
- 全方位的安全保护系统, 主、副卷扬配置三圈保护器和高度限位器, 防止钢丝绳过放和过卷, 防倾翻保护, 极限角度保护。
- 配置长度角度传感器、压力传感器, 实时显示起重机作业状态, 自动切断危险动作, 蜂鸣报警。

Optional equipment at extra fees 选配

- Additional one 6t CW block
- 100t main hook/75t main hook/75t double eye hook
- 9.5m boom extension
- Fast-socketing wire rope/Outrigger pads
- Optional berth
- Customized painting /Other equipment available upon request
- 加 1 块 6t 活动配重
- 100t 主钩 /75t 主钩 /75t 锚钩
- 9.5m 延伸臂
- 快速索节钢丝绳 / 支腿垫板
- 选配卧铺
- 特殊涂装 / 其他选配视需求定

Operating Range - Telescopic Boom 主臂起升高度



Load Chart-Telescopic Boom 主臂性能表

Optional 选配



Unit: kg

Radius (m) 幅度	12.7	15	17.3	19.6	21.9	28.8	35.7	42.6	49.5	Radius (m) 幅度
2.5	90000*									2.5
3	90000*	67000	66000							3
3.5	75000	66000	65000	53000						3.5
4	66000	65000	64000	51000	48000					4
4.5	65000	61500	60500	50000	48000					4.5
5	61000	57000	56000	49000	47000					5
5.5	55000	52500	51500	47500	45500	32500				5.5
6	50000	49500	48500	45500	43500	33500				6
6.5	46000	45000	44000	43000	42000	34000				6.5
7	42000	41000	40500	40000	40000	34200	27000			7
7.5	38500	38000	37500	37000	38000	32400	26500			7.5
8	35500	35000	34000	33500	33000	30800	26000			8
9	31000	30500	29500	29000	28500	27800	25000	19000		9
10	27200	26800	25800	25000	24800	25500	23000	18100	13000	10
11		24000	23000	22000	21800	23500	21500	17500	12700	11
12		20500	20200	20000	19500	21100	20100	17000	12400	12
14				14900	14700	16000	16800	15500	11700	14
16				11400	11300	12500	13300	13300	11000	16
18					8700	10000	10700	11200	10000	18
20						8000	8700	9200	9000	20
22						6500	7200	7700	8100	22
24						5300	6000	6400	6800	24
26						4300	5000	5400	5800	26
28							4100	4600	4900	28
30							3400	3800	4200	30
32							2800	3200	3600	32
34								2700	3000	34
36								2200	2500	36
38								1800	2100	38
40								1400	1700	40
42									1400	42
44									1100	44
46									800	46
48										48
Telescoping status 伸缩模式										
Cylinder I 一号缸	0%	25%	50%	75%	100%	100%	100%	100%	100%	Cylinder I 一号缸
Cylinder II 二号缸	0%	0%	0%	0%	0%	25%	50%	75%	100%	Cylinder II 二号缸
Rope rate 钢丝绳倍率	12	10	10	8	7	5	4	3	3	Rope rate 钢丝绳倍率

* Load with 14 rope rate 14 倍率下吊载

Load Chart-Telescopic Boom 主臂性能表 Optional 选配



Unit: kg

Radius (m) 幅度	19.6	26.5	33.4	40.3	17.3	24.2	31.1	38	44.9	Radius (m) 幅度
2.5										2.5
3					66000					3
3.5	32500				65000					3.5
4	33000				64000					4
4.5	33500				60500	32500				4.5
5	34000	31000			56000	33000				5
5.5	34500	31000			51500	33500				5.5
6	35000	31000	22500		48500	34000	29000			6
6.5	35500	31000	21500		44000	34300	29000			6.5
7	36000	30500	20500		40500	34800	29000			7
7.5	35500	30000	20000		37500	35000	28500	20000		7.5
8	34500	28800	19500	16700	34000	34200	27500	20000		8
9	31200	26200	18000	16100	29500	32500	27100	19500	15500	9
10	28600	24100	16700	15200	25800	28400	25600	18500	15000	10
11	25800	22400	15700	14300	23000	25200	24300	17700	14500	11
12	22400	21000	14900	13600	20200	21700	22500	17000	14000	12
14	17200	17900	13300	12000		16500	17300	15000	13000	14
16	13600	14300	12100	10800		13000	13700	13500	12000	16
18		11700	11000	9900		10400	11100	11600	11000	18
20		9700	9800	9200		8400	9200	9600	9900	20
22		8200	8600	8500			7600	8100	8400	22
24		7000	7300	7600			6400	6800	7100	24
26			6300	6500			5400	5800	6100	26
28			5400	5700			4500	5000	5200	28
30			4700	4900				4200	4500	30
32				4300				3600	3900	32
34				3800				3100	3300	34
36				3300					2900	36
38				2900					2400	38
40									2100	40
42									1700	42
44										44
46										46
48										48
Telescoping status 伸缩模式										
Cylinder I 一号缸	0%	0%	0%	0%	50%	50%	50%	50%	50%	Cylinder I 一号缸
Cylinder II 二号缸	25%	50%	75%	100%	0%	25%	50%	75%	100%	Cylinder II 二号缸
Rope rate 钢丝绳倍率	6	5	4	3	10	5	5	3	3	Rope rate 钢丝绳倍率

Load Chart-Telescopic Boom 主臂性能表



Unit: kg

Radius (m) 幅度	12.7	15	17.3	19.6	21.9	28.8	35.7	42.6	49.5	Radius (m) 幅度
2.5	90000*									2.5
3	90000*	67000								3
3.5	75000	66000		53000						3.5
4	70000	65000	64000	51000	48000					4
4.5	65000	61000	60000	50000	48000					4.5
5	61000	56000	56000	49000	47000					5
5.5	54000	52000	51500	47500	45500	32500				5.5
6	49000	48500	48000	45500	43500	33500				6
6.5	44500	44000	43500	42500	42000	34000				6.5
7	40500	40300	40000	39500	39000	34200	27000			7
7.5	37200	36700	36500	36300	36100	32400	26500			7.5
8	34000	33500	33000	32700	32500	30800	26000			8
9	29000	28500	28000	27800	27600	27800	25000	19000		9
10	24900	24500	24100	23900	23700	25200	23000	18100	13000	10
11		20400	20100	19800	19700	21100	21500	17500	12700	11
12		17300	17000	16700	16600	18000	18800	17000	12400	12
14			12500	12300	12100	13500	14200	14800	11700	14
16				9300	9100	10400	11100	11700	11000	16
18					6900	8200	8900	9400	9700	18
20						6400	7200	7700	8000	20
22						5100	5800	6300	6600	22
24						4000	4700	5200	5500	24
26						3100	3800	4200	4600	26
28							3000	3500	3800	28
30							2400	2800	3100	30
32							1900	2300	2600	32
34								1800	2100	34
36								1400	1700	36
38									1300	38
40									1000	40
42										42
44										44
46										46
48										48
Telescoping status 伸缩模式										
Cylinder I 一号缸	0%	25%	50%	75%	100%	100%	100%	100%	100%	Cylinder I 一号缸
Cylinder II 二号缸	0%	0%	0%	0%	0%	25%	50%	75%	100%	Cylinder II 二号缸
Rope rate 钢丝绳倍率	12	10	10	8	7	5	4	3	3	Rope rate 钢丝绳倍率

* Load with 14 rope rate 14 倍率下吊载

Load Chart-Telescopic Boom 主臂性能表



Unit: kg

Radius (m) 幅度	19.6	26.5	33.4	40.3	47.3	54.2	61.1	68	74.9	Radius (m) 幅度
2.5										2.5
3										3
3.5	32500									3.5
4	33000				64000					4
4.5	33500				60000	32500				4.5
5	34000	31000			56000	33000				5
5.5	34500	31000			51500	33500				5.5
6	35000	31000	22500		48000	34000	29000			6
6.5	35500	31000	21500		43500	34300	29000			6.5
7	36000	30500	20500		40000	34800	29000			7
7.5	35500	30000	20000		36500	35000	28500	20000		7.5
8	34500	28800	19500	16700	33000	34200	27500	20000		8
9	31000	26200	18000	16100	28000	30600	27100	19500	15500	9
10	26600	24100	16700	15200	24100	25800	25600	18500	15000	10
11	22400	22400	15700	14300	20100	21600	22500	17700	14500	11
12	19200	20000	14900	13600	17000	18500	19300	17000	14000	12
14	14600	15300	13300	12000	12500	13900	14700	15000	13000	14
16	11500	12200	12100	10800		10800	11600	12100	12000	16
18		9900	10300	9900		8600	9300	9800	10100	18
20		8200	8600	8800		6900	7600	8100	8400	20
22		6800	7200	7500			6200	6700	7000	22
24		5700	6100	6300			5100	5600	5900	24
26			5100	5400			4200	4700	4900	26
28			4400	4600			3500	3900	4200	28
30			3800	4000				3300	3500	30
32				3400				2700	3000	32
34				2900				2200	2500	34
36				2500					2100	36
38				2200					1700	38
40									1400	40
42									1100	42
44										44
46										46
48										48

Telescoping status 伸缩模式

Cylinder I 一号缸	0%	0%	0%	0%	50%	50%	50%	50%	50%	Cylinder I 一号缸
Cylinder II 二号缸	25%	50%	75%	100%	0%	25%	50%	75%	100%	Cylinder II 二号缸
Rope rate 钢丝绳倍率	6	5	4	3	10	5	5	3	3	Rope rate 钢丝绳倍率

Load Chart-Telescopic Boom 主臂性能表



Unit: kg

Radius (m) 幅度	12.7	15	17.3	19.6	21.9	28.8	35.7	42.6	49.5	Radius (m) 幅度
2.5	90000*									2.5
3	90000*	67000	66000							3
3.5	68000	66000	65000	53000						3.5
4	66000	65000	64000	51000	48000					4
4.5	61000	59000	55000	50000	48000					4.5
5	56000	54000	51000	49000	44000					5
5.5	51500	48500	47000	46000	41500	32500				5.5
6	47500	44000	43500	43000	38000	33500				6
6.5	41000	40000	39000	38500	36000	34000				6.5
7	37000	36500	35000	34500	34000	34200	27000			7
7.5	34000	33500	32000	31500	31000	32400	26500			7.5
8	31000	30500	29500	29000	28500	30800	26000			8
9	25500	25100	24800	24500	24300	26000	25000	19000		9
10	20600	20300	19900	19700	19500	21100	22100	18100	13000	10
11		16700	16400	16200	16000	17500	18400	17500	12700	11
12		14000	13700	13500	13300	14700	15600	16200	12400	12
14			9800	9600	9400	10800	11600	12200	11700	14
16				6800	6700	8000	8800	9400	9800	16
18					4700	6000	6800	7300	7700	18
20						4500	5200	5700	6100	20
22						3300	4000	4500	4900	22
24						2400	3100	3600	3900	24
26						1600	2300	2800	3100	26
28							1700	2100	2500	28
30							1100	1600	1900	30
32								1100	1400	32
34									1000	34
36										36
38										38
40										40
42										42
44										44
46										46
48										48

Telescoping status 伸缩模式

Cylinder I 一号缸	0%	25%	50%	75%	100%	100%	100%	100%	100%	Cylinder I 一号缸
Cylinder II 二号缸	0%	0%	0%	0%	0%	25%	50%	75%	100%	Cylinder II 二号缸
Rope rate 钢丝绳倍率	12	10	10	8	7	5	4	3	3	Rope rate 钢丝绳倍率

* Load with 14 rope rate 14 倍率下吊载

Load Chart-Telescopic Boom 主臂性能表



Unit: kg

Radius (m) 幅度	19.6	26.5	33.4	40.3	47.3	54.2	61.1	68	74.9	Radius (m) 幅度
2.5										2.5
3					66000					3
3.5	32500				65000					3.5
4	33000				64000					4
4.5	33500				55000	32500				4.5
5	34000	31000			51000	33000				5
5.5	34500	31000			47000	33500				5.5
6	35000	31000	22500		43500	34000	29000			6
6.5	35500	31000	21500		39000	34300	29000			6.5
7	36000	30500	20500		35000	34800	29000			7
7.5	35500	30000	20000		32000	35000	28500	20000		7.5
8	34500	28800	19500	16700	29500	33600	27500	20000		8
9	27400	26200	18000	16100	24800	26500	27100	19500	15500	9
10	22400	23300	16700	15200	19900	21600	22600	18500	15000	10
11	18800	19600	15700	14300	16400	18000	18900	17700	14500	11
12	15900	16700	14900	13600	13700	15200	16100	16700	14000	12
14	11900	12700	13100	12000	9800	11200	12000	12600	13000	14
16	9100	9900	10300	10700		8400	9200	9800	10100	16
18		7800	8200	8500		6400	7200	7700	8000	18
20		6200	6700	7000		4900	5600	6200	6500	20
22		5000	5400	5700			4400	4900	5200	22
24		4100	4500	4700			3500	4000	4300	24
26			3700	3900			2700	3200	3500	26
28			3000	3300			2100	2500	2800	28
30			2500	2700				2000	2200	30
32				2200				1500	1800	32
34				1800				1100	1300	34
36				1400					1000	36
38				1100						38
40										40
42										42
44										44
46										46
48										48
Telescoping status 伸缩模式										
Cylinder I 一号缸	0%	0%	0%	0%	50%	50%	50%	50%	50%	Cylinder I 一号缸
Cylinder II 二号缸	25%	50%	75%	100%	0%	25%	50%	75%	100%	Cylinder II 二号缸
Rope rate 钢丝绳倍率	6	5	4	3	10	5	5	3	3	Rope rate 钢丝绳倍率

Load Chart-Telescopic Boom 主臂性能表



Unit: kg

Radius (m) 幅度	12.7	15	17.3	19.6	21.9	28.8	35.7	42.6	49.5	Radius (m) 幅度	
2.5	90000*									2.5	
3	90000*	67000	66000							3	
3.5	72000	66000	65000	53000						3.5	
4	66000	65000	64000	51000	48000					4	
4.5	60000	58000	55000	50000	46000					4.5	
5	55000	54000	51000	49000	44000					5	
5.5	49000	48500	47000	46000	41000	32500				5.5	
6	44000	43500	43500	43000	38000	33500				6	
6.5	40000	39500	39000	38500	36000	34000				6.5	
7	36000	35500	35000	34500	34000	34200	27000			7	
7.5	33000	32500	32000	31500	31000	32400	26500			7.5	
8	30000	29500	29500	29000	28500	30800	26000			8	
9	24600	24200	23800	23600	23400	25100	25000	19000		9	
10	19900	19500	19200	19000	18800	20300	21300	18100	13000	10	
11		16100	15700	15500	15400	16800	17700	17500	12700	11	
12		13400	13100	12900	12700	14200	15000	15600	12400	12	
14			9200	9000	8900	10300	11100	11700	11700	14	
16				6400	6200	7500	8300	8900	9300	16	
18					4300	5600	6400	6900	7300	18	
20						4100	4900	5400	5800	20	
22							3000	3700	4200	22	
24								2100	2800	3300	24
26									1400	2100	26
28										1400	28
30										900	30
32											32
34										900	34
36											36
38											38
40											40
42											42
44											44
46											46
48											48
Telescoping status 伸缩模式											
Cylinder I 一号缸	0%	25%	50%	75%	100%	100%	100%	100%	100%	Cylinder I 一号缸	
Cylinder II 二号缸	0%	0%	0%	0%	0%	25%	50%	75%	100%	Cylinder II 二号缸	
Rope rate 钢丝绳倍率	12	10	10	8	7	5	4	3	3	Rope rate 钢丝绳倍率	

* Load with 14 rope rate 14 倍率下吊载

Load Chart-Telescopic Boom 主臂性能表



Unit: kg

Radius (m) 幅度	19.6	26.5	33.4	40.3	17.3	24.2	31.1	38	44.9	Radius (m) 幅度
2.5										2.5
3					66000					3
3.5	32500				65000					3.5
4	33000				64000					4
4.5	33500				55000	32500				4.5
5	34000	31000			51000	33000				5
5.5	34500	31000			47000	33500				5.5
6	35000	31000	22500		43500	34000	29000			6
6.5	35500	31000	21500		39000	34300	29000			6.5
7	36000	30500	20500		35000	34800	29000			7
7.5	35500	30000	20000		32000	35000	28500	20000		7.5
8	33500	28800	19500	16700	29500	32500	27500	20000		8
9	26500	26200	18000	16100	23800	25600	26700	19500	15500	9
10	21600	22500	16700	15200	19200	20900	21800	18500	15000	10
11	18100	18900	15700	14300	15700	17300	18200	17700	14500	11
12	15400	16100	14900	13600	13100	14600	15500	16100	14000	12
14	11500	12200	12700	12000	9200	10700	11600	12100	12500	14
16	8700	9400	9900	10200		8000	8800	9300	9700	16
18		7400	7800	8100		6000	6800	7300	7700	18
20		5900	6300	6600		4600	5300	5800	6100	20
22		4700	5100	5400			4100	4600	4900	22
24		3800	4200	4500			3200	3700	4000	24
26			3400	3700			2500	2900	3200	26
28			2800	3000			1900	2300	2600	28
30			2300	2500				1800	2000	30
32				2000				1300	1600	32
34				1600				900	1200	34
36				1300					800	36
38				1000						38
40										40
42										42
44										44
46										46
48										48
Telescoping status 伸缩模式										
Cylinder I 一号缸	0%	0%	0%	0%	50%	50%	50%	50%	50%	Cylinder I 一号缸
Cylinder II 二号缸	25%	50%	75%	100%	0%	25%	50%	75%	100%	Cylinder II 二号缸
Rope rate 钢丝绳倍率	6	5	4	3	10	5	5	3	3	Rope rate 钢丝绳倍率

Load Chart-Telescopic Boom 主臂性能表



Unit: kg

Radius (m) 幅度	12.7	15	17.3	19.6	21.9	28.8	35.7	42.6	49.5	Radius (m) 幅度
2.5	90000*									2.5
3	90000*	67000	66000							3
3.5	70000	66000	65000	53000						3.5
4	63000	61000	60000	51000	48000					4
4.5	57000	55000	55000	50000	45000					4.5
5	52000	51000	47000	46500	42000					5
5.5	46500	45500	43500	43000	38500	32500				5.5
6	42000	41000	40500	40000	36000	33500				6
6.5	38000	37500	36500	36000	34000	34000				6.5
7	34500	34000	33500	32500	32000	34200	27000			7
7.5	29900	29400	29000	28700	28500	30400	26500			7.5
8	25900	25400	25000	24800	24600	26400	26000			8
9	20100	19700	19300	19100	18900	20600	21600	19000		9
10	16000	15700	15300	15100	14900	16500	17500	18100	13000	10
11		12500	12200	12000	11800	13400	14400	15000	12700	11
12		10100	9800	9600	9400	11000	11900	12500	12400	12
14			6500	6300	6200	7600	8400	9000	9400	14
16				4100	4000	5300	6100	6600	7100	16
18					2400	3700	4400	5000	5400	18
20						2400	3200	3700	4100	20
22						1500	2200	2700	3100	22
24							1500	1900	2300	24
26							800	1300	1700	26
28								800	1100	28
30										30
32										32
34										34
36										36
38										38
40										40
42										42
44										44
46										46
48										48
Telescoping status 伸缩模式										
Cylinder I 一号缸	0%	25%	50%	75%	100%	100%	100%	100%	100%	Cylinder I 一号缸
Cylinder II 二号缸	0%	0%	0%	0%	0%	25%	50%	75%	100%	Cylinder II 二号缸
Rope rate 钢丝绳倍率	12	10	10	8	7	5	4	3	3	Rope rate 钢丝绳倍率

* Load with 14 rope rate 14 倍率下吊载

Load Chart-Telescopic Boom 主臂性能表



Unit: kg

Radius (m) 幅度	19.6	26.5	33.4	40.3	17.3	24.2	31.1	38	44.9	Radius (m) 幅度
2.5										2.5
3					66000					3
3.5	32500				65000					3.5
4	33000				60000					4
4.5	33500				55000	32500				4.5
5	34000	31000			47000	33000				5
5.5	34500	31000			43500	33500				5.5
6	35000	31000	22500		40500	34000	29000			6
6.5	35500	31000	21500		36500	34300	29000			6.5
7	36000	30500	20500		33500	34800	29000			7
7.5	32000	30000	20000		29000	31100	28500	20000		7.5
8	27900	28800	19500	16700	25000	27000	27500	20000		8
9	22000	22900	18000	16100	19300	21100	22100	19500	15500	9
10	17800	18700	16700	15200	15300	17000	18000	18500	15000	10
11	14700	15600	15700	14300	12200	13900	14900	15500	14500	11
12	12200	13100	13600	13600	9800	11500	12400	13000	13400	12
14	8700	9500	10000	10400	6500	8000	8900	9500	9800	14
16	6400	7200	7600	7900		5700	6500	7100	7400	16
18		5500	5900	6200		4100	4900	5400	5700	18
20		4200	4600	4900		2900	3600	4100	4400	20
22		3200	3600	3900			2600	3100	3400	22
24		2500	2800	3100			1900	2300	2600	24
26			2200	2400			1200	1700	2000	26
28			1700	1900				1200	1400	28
30			1200	1400					1000	30
32				1100						32
34										34
36										36
38										38
40										40
42										42
44										44
46										46
48										48
Telescoping status 伸缩模式										
Cylinder I 一号缸	0%	0%	0%	0%	50%	50%	50%	50%	50%	Cylinder I 一号缸
Cylinder II 二号缸	25%	50%	75%	100%	0%	25%	50%	75%	100%	Cylinder II 二号缸
Rope rate 钢丝绳倍率	6	5	4	3	10	5	5	3	3	Rope rate 钢丝绳倍率

Load Chart-Telescopic Boom 主臂性能表

Optional 选配



Unit: kg

Radius (m) 幅度	12.7	15	17.3	19.6	21.9	28.8	35.7	42.6	49.5	Radius (m) 幅度
2.5										2.5
3	65000	62000	61000							3
3.5	63000	61000	60000	50000						3.5
4	61000	59000	57000	49000	45000					4
4.5	55000	54000	53000	48000	44000					4.5
5	50500	49500	48500	46000	43000					5
5.5	46500	45500	44500	43000	41000	32500				5.5
6	43000	42000	41000	40000	39000	33500				6
6.5	38200	37700	37000	36500	36000	34000				6.5
7	33000	32600	32200	32000	31800	33500	27000			7
7.5	29000	28500	28200	28000	27800	29400	26500			7.5
8	25700	25300	24900	24700	24500	26100	26000			8
9	20600	20200	19900	19700	19500	21000	21900	19000		9
10	16900	16600	16300	16100	15900	17300	18100	18100	13000	10
11		13800	13500	13300	13100	14500	15300	15900	12700	11
12		11600	11300	11100	11000	12300	13000	13600	12400	12
14			8100	7900	7800	9000	9700	10300	10600	14
16				5700	5500	6700	7400	7900	8300	16
18					3900	5000	5700	6200	6500	18
20						3700	4400	4900	5200	20
22						2700	3400	3800	4100	22
24						1900	2500	3000	3300	24
26						1200	1800	2300	2500	26
28							1200	1700	2000	28
30								1200	1400	30
32									1000	32
34										34
36										36
38										38
40										40
42										42
44										44
46										46
48										48
Telescoping status 伸缩模式										
Cylinder I 一号缸	0%	25%	50%	75%	100%	100%	100%	100%	100%	Cylinder I 一号缸
Cylinder II 二号缸	0%	0%	0%	0%	0%	25%	50%	75%	100%	Cylinder II 二号缸
Rope rate 钢丝绳倍率	12	10	10	8	7	5	4	3	3	Rope rate 钢丝绳倍率

Load Chart-Telescopic Boom 主臂性能表

Optional 选配



Unit: kg

Radius (m) 幅度	19.6	26.5	33.4	40.3	17.3	24.2	31.1	38	44.9	Radius (m) 幅度
2.5										2.5
3					61000					3
3.5	32500				60000					3.5
4	33000				57000					4
4.5	33500				53000	32500				4.5
5	34000	31000			48500	33000				5
5.5	34500	31000			44500	33500				5.5
6	35000	31000	22500		41000	34000	29000			6
6.5	35500	31000	21500		37000	34300	29000			6.5
7	34900	30500	20500		32200	34100	29000			7
7.5	30800	30000	20000		28200	29900	28500	20000		7.5
8	27400	28300	19500	16700	24900	26600	27500	20000		8
9	22200	23100	18000	16100	19900	21500	22400	19500	15500	9
10	18500	19300	16700	15200	16300	17800	18600	18500	15000	10
11	15600	16400	15700	14300	13500	14900	15700	16300	14500	11
12	13400	14100	14600	13600	11300	12700	13500	14000	14000	12
14	10100	10800	11200	11500	8100	9400	10200	10700	11000	14
16	7800	8400	8800	9100		7100	7800	8300	8600	16
18		6700	7100	7400		5400	6100	6600	6900	18
20		5400	5700	6000		4100	4800	5300	5600	20
22		4300	4700	4900			3800	4200	4500	22
24		3500	3800	4100			2900	3400	3600	24
26			3100	3400			2200	2700	2900	26
28			2500	2800			1600	2100	2300	28
30			2000	2200				1500	1800	30
32				1800				1100	1400	32
34				1400					1000	34
36				1100						36
38				800						38
40										40
42										42
44										44
46										46
48										48
Telescoping status 伸缩模式										
Cylinder I 一号缸	0%	0%	0%	0%	50%	50%	50%	50%	50%	Cylinder I 一号缸
Cylinder II 二号缸	25%	50%	75%	100%	0%	25%	50%	75%	100%	Cylinder II 二号缸
Rope rate 钢丝绳倍率	6	5	4	3	10	5	5	3	3	Rope rate 钢丝绳倍率

Load Chart-Telescopic Boom 主臂性能表



Unit: kg

Radius (m) 幅度	12.7	15	17.3	19.6	21.9	28.8	35.7	42.6	49.5	Radius (m) 幅度
2.5										2.5
3	65000	62000	61000							3
3.5	63000	61000	60000	50000						3.5
4	58000	57000	56000	49000	45000					4
4.5	52500	51500	50500	47500	44000					4.5
5	48000	47000	46000	44500	43000					5
5.5	44400	43500	42500	41500	41000	32500				5.5
6	36900	36400	36000	35700	35500	33500				6
6.5	31300	30800	30400	30200	29900	31800				6.5
7	26900	26500	26100	25900	25700	27400	27000			7
7.5	23500	23100	22700	22500	22300	23900	24900			7.5
8	20700	20300	20000	19700	19600	21100	22100			8
9	16400	16000	15700	15500	15300	16800	17700	18300		9
10	13300	13000	12700	12500	12300	13700	14500	15100	13000	10
11		10600	10300	10100	10000	11300	12100	12700	12700	11
12		8700	8500	8300	8100	9400	10200	10700	11100	12
14			5800	5600	5400	6700	7400	7900	8300	14
16				3700	3500	4700	5400	5900	6300	16
18					2100	3300	4000	4500	4800	18
20						2200	2900	3300	3600	20
22						1300	2000	2400	2700	22
24							1300	1700	2000	24
26								1100	1400	26
28									900	28
30										30
32										32
34										34
36										36
38										38
40										40
42										42
44										44
46										46
48										48
Telescoping status 伸缩模式										
Cylinder I 一号缸	0%	25%	50%	75%	100%	100%	100%	100%	100%	Cylinder I 一号缸
Cylinder II 二号缸	0%	0%	0%	0%	0%	25%	50%	75%	100%	Cylinder II 二号缸
Rope rate 钢丝绳倍率	12	10	10	8	7	5	4	3	3	Rope rate 钢丝绳倍率

Load Chart-Telescopic Boom 主臂性能表



Unit: kg

Radius (m) 幅度	19.6	26.5	33.4	40.3	17.3	24.2	31.1	38	44.9	Radius (m) 幅度
2.5										2.5
3					61000					3
3.5	32500				60000					3.5
4	33000				56000					4
4.5	33500				50500	32500				4.5
5	34000	31000			46000	33000				5
5.5	34500	31000			42500	33500				5.5
6	35000	31000	22500		36000	34000	29000			6
6.5	33200	31000	21500		30400	32300	29000			6.5
7	28800	29800	20500		26100	28000	29000			7
7.5	25300	26200	20000		22700	24500	25500	20000		7.5
8	22400	23300	19500	16700	20000	21600	22600	20000		8
9	18100	18900	18000	16100	15700	17300	18200	18800	15500	9
10	14900	15600	16100	15200	12700	14100	15000	15600	15000	10
11	12400	13200	13700	14000	10300	11700	12500	13100	13500	11
12	10500	11300	11700	12000	8500	9900	10600	11200	11500	12
14	7700	8400	8800	9100	5800	7100	7800	8300	8700	14
16	5800	6400	6800	7100		5100	5800	6300	6700	16
18		5000	5400	5600		3700	4400	4900	5200	18
20		3800	4200	4500		2600	3300	3700	4000	20
22		2900	3300	3600			2400	2800	3100	22
24		2200	2600	2800			1700	2100	2400	24
26			2000	2200			1100	1500	1800	26
28			1500	1700				1000	1300	28
30			1100	1300					800	30
32				900						32
34										34
36										36
38										38
40										40
42										42
44										44
46										46
48										48
Telescoping status 伸缩模式										
Cylinder I 一号缸	0%	0%	0%	0%	50%	50%	50%	50%	50%	Cylinder I 一号缸
Cylinder II 二号缸	25%	50%	75%	100%	0%	25%	50%	75%	100%	Cylinder II 二号缸
Rope rate 钢丝绳倍率	6	5	4	3	10	5	5	3	3	Rope rate 钢丝绳倍率

Load Chart-Telescopic Boom 主臂性能表



Unit: kg

Radius (m) 幅度	12.7	15	17.3	19.6	21.9	28.8	35.7	42.6	49.5	Radius (m) 幅度
2.5										2.5
3	65000	62000	61000							3
3.5	63000	61000	60000	50000						3.5
4	57000	56000	55000	49000	45000					4
4.5	51500	50500	49500	47000	44000					4.5
5	45800	45200	44700	44000	43000					5
5.5	36700	36100	35700	35400	35200	32500				5.5
6	30300	29800	29400	29100	28900	30800				6
6.5	25500	25000	24700	24400	24200	26000				6.5
7	21900	21400	21000	20800	20600	22300	23400			7
7.5	18900	18500	18200	17900	17700	19400	20400			7.5
8	16600	16200	15800	15600	15400	17000	17900			8
9	12900	12600	12200	12000	11900	13300	14200	14800		9
10	10300	9900	9600	9400	9300	10700	11500	12100	12500	10
11		7900	7700	7500	7300	8600	9500	10000	10400	11
12		6400	6100	5900	5700	7000	7800	8400	8700	12
14			3800	3600	3500	4700	5400	6000	6300	14
16				2000	1900	3100	3800	4300	4600	16
18						1800	2500	3000	3300	18
20						900	1600	2100	2400	20
22							800	1300	1600	22
24									1000	24
26										26
28										28
30										30
32										32
34										34
36										36
38										38
40										40
42										42
44										44
46										46
48										48
Telescoping status 伸缩模式										
Cylinder I 一号缸	0%	25%	50%	75%	100%	100%	100%	100%	100%	Cylinder I 一号缸
Cylinder II 二号缸	0%	0%	0%	0%	0%	25%	50%	75%	100%	Cylinder II 二号缸
Rope rate 钢丝绳倍率	12	10	10	8	7	5	4	3	3	Rope rate 钢丝绳倍率

Load Chart-Telescopic Boom 主臂性能表



Unit: kg

Radius (m) 幅度	19.6	26.5	33.4	40.3	17.3	24.2	31.1	38	44.9	Radius (m) 幅度
2.5										2.5
3					61000					3
3.5	32500				60000					3.5
4	33000				55000					4
4.5	33500				49500	32500				4.5
5	34000	31000			44700	33000				5
5.5	34500	31000			35700	33500				5.5
6	32400	31000	22500		29400	31400	29000			6
6.5	27500	28500	21500		24700	26600	27700			6.5
7	23700	24700	20500		21000	22900	23900			7
7.5	20700	21700	20000		18200	19900	20900	20000		7.5
8	18300	19200	19500	16700	15800	17500	18400	19100		8
9	14600	15400	15900	16100	12200	13800	14700	15300	15500	9
10	11900	12600	13100	13500	9600	11100	12000	12600	12900	10
11	9800	10500	11000	11300	7700	9100	9900	10500	10800	11
12	8200	8900	9300	9700	6100	7500	8300	8800	9200	12
14	5800	6500	6900	7200	3800	5100	5900	6400	6700	14
16	4100	4800	5200	5500		3500	4200	4700	5000	16
18		3500	3900	4200		2300	2900	3400	3700	18
20		2600	2900	3200		1300	2000	2500	2700	20
22		1800	2200	2400			1200	1700	2000	22
24		1200	1500	1800			0	1100	1300	24
26			1000	1300					800	26
28				800						28
30										30
32										32
34										34
36										36
38										38
40										40
42										42
44										44
46										46
48										48
Telescoping status 伸缩模式										
Cylinder I 一号缸	0%	0%	0%	0%	50%	50%	50%	50%	50%	Cylinder I 一号缸
Cylinder II 二号缸	25%	50%	75%	100%	0%	25%	50%	75%	100%	Cylinder II 二号缸
Rope rate 钢丝绳倍率	6	5	4	3	10	5	5	3	3	Rope rate 钢丝绳倍率

Load Chart-Telescopic Boom 主臂性能表



Unit: kg

Radius (m) 幅度	12.7	15	17.3	19.6	21.9	28.8	35.7	42.6	49.5	Radius (m) 幅度
2.5										2.5
3	65000	62000	61000							3
3.5	63000	61000	60000	50000						3.5
4	57000	56000	55000	49000	45000					4
4.5	51000	50000	49000	46500	44000					4.5
5	43900	43300	42800	42500	42200					5
5.5	35100	34600	34100	33900	33600	32500				5.5
6	29000	28400	28000	27800	27500	29500				6
6.5	24400	23900	23500	23300	23100	24900				6.5
7	20800	20400	20000	19800	19600	21300	22400			7
7.5	18000	17600	17300	17000	16800	18500	19500			7.5
8	15700	15300	15000	14800	14600	16200	17100			8
9	12300	11900	11600	11300	11200	12600	13500	14200		9
10	9700	9300	9000	8800	8700	10100	10900	11500	11900	10
11		7400	7100	6900	6800	8100	8900	9500	9900	11
12		5900	5600	5400	5300	6600	7400	7900	8300	12
14			3400	3200	3100	4300	5100	5600	5900	14
16				1700	1500	2700	3400	3900	4300	16
18						1600	2300	2700	3000	18
20							1300	1800	2100	20
22								1100	1400	22
24									800	24
26										26
28										28
30										30
32										32
34										34
36										36
38										38
40										40
42										42
44										44
46										46
48										48
Telescoping status 伸缩模式										
Cylinder I 一号缸	0%	25%	50%	75%	100%	100%	100%	100%	100%	Cylinder I 一号缸
Cylinder II 二号缸	0%	0%	0%	0%	0%	25%	50%	75%	100%	Cylinder II 二号缸
Rope rate 钢丝绳倍率	12	10	10	8	7	5	4	3	3	Rope rate 钢丝绳倍率

Load Chart-Telescopic Boom 主臂性能表



Unit: kg

Radius (m) 幅度	19.6	26.5	33.4	40.3	17.3	24.2	31.1	38	44.9	Radius (m) 幅度
2.5										2.5
3					61000					3
3.5	32500				60000					3.5
4	33000				55000					4
4.5	33500				49000	32500				4.5
5	34000	31000			42800	33000				5
5.5	34500	31000			34100	33500				5.5
6	31100	31000	22500		28000	30100	29000			6
6.5	26400	27400	21500		23500	25500	26600			6.5
7	22700	23700	20500		20000	21900	22900			7
7.5	19800	20700	20000		17300	19000	20000	20000		7.5
8	17500	18300	18900	16700	15000	16700	17600	18300		8
9	13900	14700	15200	15600	11600	13100	14000	14600	15000	9
10	11300	12000	12500	12900	9000	10500	11400	12000	12300	10
11	9300	10000	10500	10800	7100	8600	9400	9900	10300	11
12	7700	8400	8900	9200	5600	7000	7800	8400	8700	12
14	5400	6100	6500	6800	3400	4700	5500	6000	6300	14
16	3800	4400	4800	5100		3100	3800	4400	4700	16
18	2900	3200	3600	3900		2000	2700	3100	3400	18
20		2300	2700	2900		1100	1700	2200	2500	20
22		1600	1900	2200			1000	1500	1700	22
24		1000	1300	1600				900	1100	24
26			800	1100						26
28										28
30										30
32										32
34										34
36										36
38										38
40										40
42										42
44										44
46										46
48										48
Telescoping status 伸缩模式										
Cylinder I 一号缸	0%	0%	0%	0%	50%	50%	50%	50%	50%	Cylinder I 一号缸
Cylinder II 二号缸	25%	50%	75%	100%	0%	25%	50%	75%	100%	Cylinder II 二号缸
Rope rate 钢丝绳倍率	6	5	4	3	10	5	5	3	3	Rope rate 钢丝绳倍率

Load Chart-Telescopic Boom 主臂性能表



Unit: kg

Radius (m) 幅度	12.7	15	17.3	19.6	21.9	28.8	35.7	42.6	49.5	Radius (m) 幅度
2.5										2.5
3	65000	62000	61000							3
3.5	60000	61000	57000	50000						3.5
4	55000	56000	53000	49000	45000					4
4.5	45500	50000	44300	43900	43600					4.5
5	34600	43300	33500	33100	32900					5
5.5	27400	34600	26400	26100	25900	28000				5.5
6	22400	28400	21400	21200	21000	22900				6
6.5	18600	23900	17800	17500	17300	19100				6.5
7	15800	20400	14900	14700	14500	16200	17300			7
7.5	13500	17600	12700	12500	12300	13900	14900			7.5
8	11600	15300	10900	10600	10500	12000	13000			8
9	8800	11900	8100	7900	7700	9100	10000	10700		9
10	6700	9300	6000	5800	5700	7000	7900	8500	8900	10
11		7400	4500	4300	4100	5500	6300	6800	7200	11
12		5900	3300	3100	2900	4200	5000	5500	5900	12
14		4900	1500			2400	3100	3600	4000	14
16							1800	2300	2600	16
18								1300	1600	18
20										20
22										22
24										24
26										26
28										28
30										30
32										32
34										34
36										36
38										38
40										40
42										42
44										44
46										46
48										48
Telescoping status 伸缩模式										
Cylinder I 一号缸	0%	25%	50%	75%	100%	100%	100%	100%	100%	Cylinder I 一号缸
Cylinder II 二号缸	0%	0%	0%	0%	0%	25%	50%	75%	100%	Cylinder II 二号缸
Rope rate 钢丝绳倍率	12	10	10	8	7	5	4	3	3	Rope rate 钢丝绳倍率

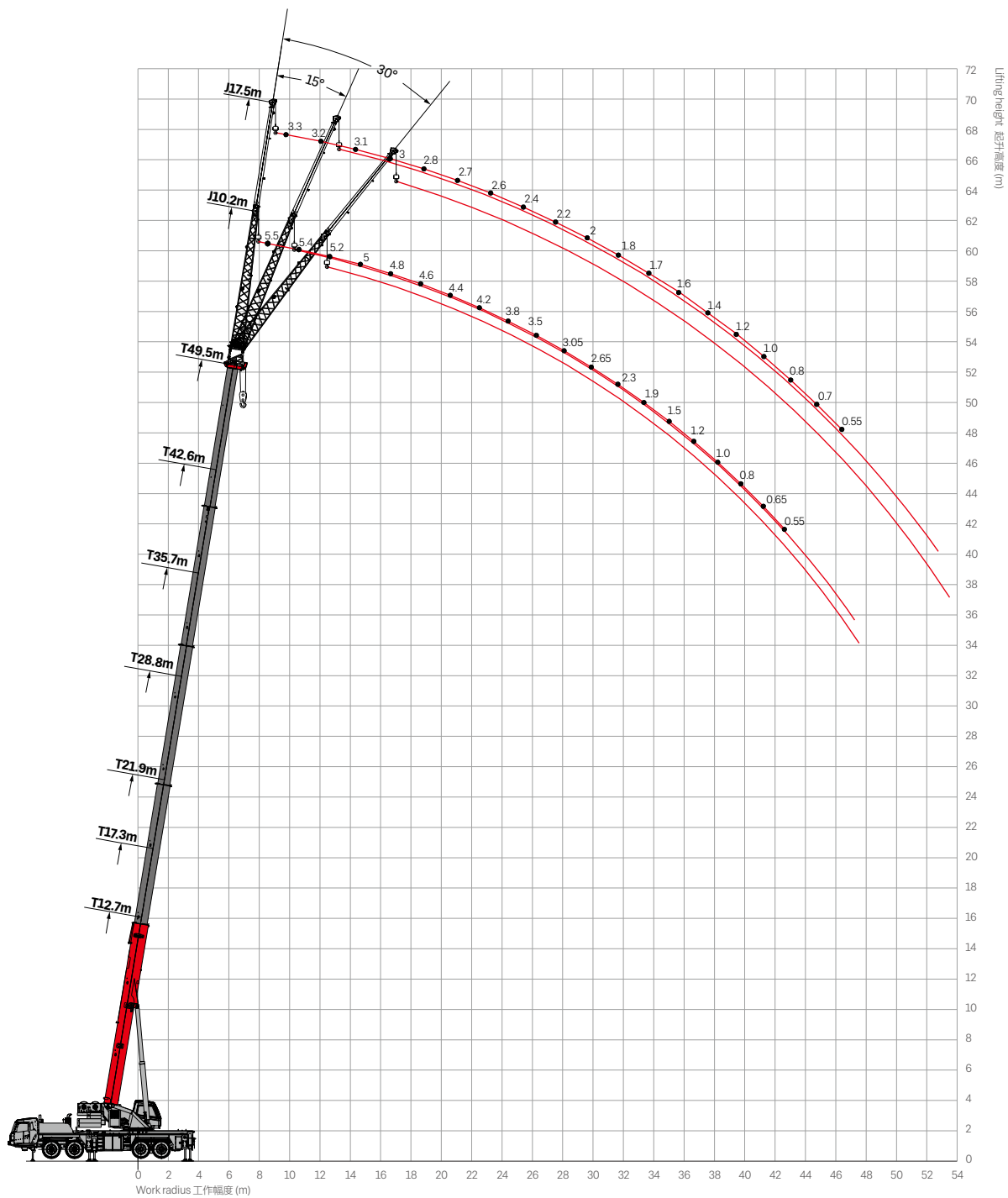
Load Chart-Telescopic Boom 主臂性能表



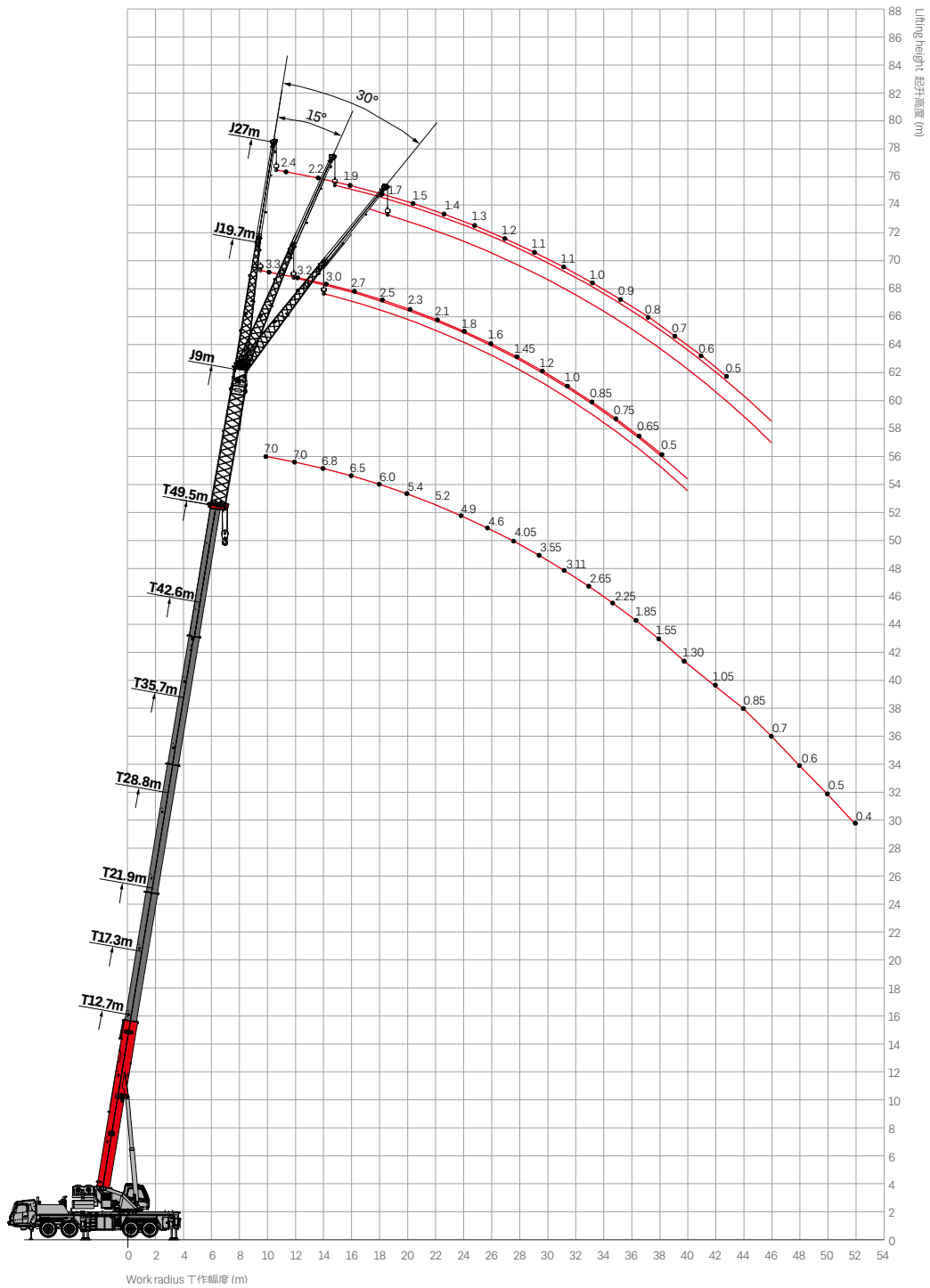
Unit: kg

Radius (m) 幅度	19.6	26.5	33.4	40.3	17.3	24.2	31.1	38	44.9	Radius (m) 幅度
2.5										2.5
3					61000					3
3.5	32500				57000					3.5
4	33000				53000					4
4.5	33500				44300	32500				4.5
5	34000	31000			33500	33000				5
5.5	29700	30900			26400	28700				5.5
6	24500	25600	22500		21400	23500	24700			6
6.5	20600	21600	21500		17800	19700	20800			6.5
7	17600	18600	19200		14900	16800	17800			7
7.5	15300	16200	16800		12700	14400	15400	16100		7.5
8	13300	14200	14800	15200	10900	12500	13500	14200		8
9	10400	11200	11700	12100	8100	9600	10500	11200	11500	9
10	8200	9000	9500	9900	6000	7500	8400	9000	9300	10
11	6600	7400	7800	8200	4500	5900	6700	7300	7600	11
12	5300	6000	6500	6800	3300	4600	5400	6000	6300	12
14	3400	4100	4500	4800	1500	2800	3500	4000	4400	14
16	2100	2800	3200	3500		1500	2200	2700	3000	16
18		1800	2200	2500			1200	1700	2000	18
20		1000	1400	1700				900	1200	20
22			800	1000						22
24										24
26										26
28										28
30										30
32										32
34										34
36										36
38										38
40										40
42										42
44										44
46										46
48										48
Telescoping status 伸缩模式										
Cylinder I 一号缸	0%	0%	0%	0%	50%	50%	50%	50%	50%	Cylinder I 一号缸
Cylinder II 二号缸	25%	50%	75%	100%	0%	25%	50%	75%	100%	Cylinder II 二号缸
Rope rate 钢丝绳倍率	6	5	4	3	10	5	5	3	3	Rope rate 钢丝绳倍率

Operating Range - Jib 副臂起升高度



Operating Range - Jib with Extension 副臂+延伸臂起升高度



Load Chart - Jib (with boom extension) 副臂性能表 Optional 选配



Unit: kg

Boom angle (°) 主臂仰角	50+10.2			50+17.5			50+9*	9.5*+10.2			9.5*+17.5			Boom angle (°) 主臂仰角
	0°	15°	30°	0°	15°	30°	0°	0°	15°	30°	0°	15°	30°	
80	5500	4500	3500	3300	2400	1600	7000	3300	2000	2000	2400	1500	1200	80
78	5400	4400	3400	3200	2200	1500	7000	3200	1900	1900	2200	1400	1100	78
76	5200	4200	3300	3100	2100	1500	6800	3000	1800	1800	1900	1300	1100	76
74	5000	4000	3200	3000	2000	1400	6500	2700	1700	1700	1700	1200	1000	74
72	4800	3900	3100	2800	1900	1400	6000	2500	1700	1700	1500	1100	1000	72
70	4600	3800	3000	2700	1800	1400	5400	2300	1600	1600	1400	1100	900	70
68	4400	3600	2900	2600	1700	1300	5200	2100	1500	1500	1300	1000	900	68
66	4200	3400	2800	2400	1600	1300	4900	2000	1400	1400	1200	1000	800	66
64	3800	3200	2700	2200	1500	1300	4600	1800	1400	1400	1100	900	800	64
62	3500	3000	2600	2000	1500	1200	4300	1600	1300	1300	1100	900	800	62
60	3200	2800	2400	1800	1400	1200	3900	1500	1200	1200	1000	800	700	60
58	2900	2600	2200	1700	1400	1200	3550	1400	1100	1100	1000	800	700	58
56	2600	2400	2100	1600	1300	1100	3200	1300	1000	1000	900	800	700	56
54	2300	2150	2000	1500	1300	1100	2850	1150	950	950	850	700	600	54
52	1950	1850	1750	1400	1200	1100	2500	1000	800	800	700	600	550	52
50	1650	1550	1500	1300	1200	1000	2250	900	750	750	650	550	500	50
48	1450	1350	1300	1200	1100	1000	2000	800	700	650	600	500		48
46	1300	1200	1150	1100	1000	900	1750	700	650	600	550			46
44	1150	1050	1000	950	850	800	1500	600	550	500	500			44
42	1000	900	900	850	750	750	1250	500						42
40	800	700	700	700	600	550	1050							40
38	700	650	600	600	550	500	850							38
36	650	600	550	550	500		650							36
Rope rate 钢丝绳倍率	1													Rope rate 钢丝绳倍率

* Optional 选配

Load Chart-Jib 副臂性能表



Unit: kg

Boom angle (°) 主臂仰角	50+10.2			50+17.5			50+9*	9.5*+10.2			9.5*+17.5			Boom angle (°) 主臂仰角
	0°	15°	30°	0°	15°	30°	0°	0°	15°	30°	0°	15°	30°	
80	5500	4500	3500	3300	2400	1600	7000	3300	2600	2000	2400	1500	1200	80
78	5400	4400	3400	3200	2200	1500	7000	3200	2400	1900	2200	1400	1100	78
76	5200	4200	3300	3100	2100	1500	6800	3000	2300	1800	1900	1300	1100	76
74	5000	4000	3200	3000	2000	1400	6500	2700	2200	1700	1700	1200	1000	74
72	4800	3900	3100	2800	1900	1400	6000	2500	2100	1700	1500	1100	1000	72
70	4600	3800	3000	2700	1800	1400	5400	2300	2000	1600	1400	1100	900	70
68	4400	3600	2900	2600	1700	1300	5200	2100	1800	1500	1300	1000	900	68
66	4200	3400	2800	2400	1600	1300	4900	2000	1700	1400	1200	1000	800	66
64	3800	3200	2700	2200	1500	1300	4600	1800	1600	1400	1100	900	800	64
62	3500	3000	2600	2000	1500	1200	4050	1600	1500	1300	1100	900	800	62
60	3050	2750	2400	1800	1400	1200	3550	1450	1300	1150	1000	800	700	60
58	2650	2400	2150	1700	1400	1200	3100	1200	1100	950	900	750	650	58
56	2300	2100	1950	1600	1300	1100	2650	1000	900	850	800	650	600	56
54	1900	1800	1750	1400	1200	1050	2250	850	800	750	700	600	500	54
52	1500	1400	1300	1200	1050	950	1850	750	700	650	600	500		52
50	1200	1100	1000	1000	900	800	1550	650	600	550	500			50
48	1000	900	850	800	750	700	1300	500						48
46	800	750	700	700	650	600	1050							46
44	650	600	550	550	500		850							44
42	550	500					700							42
40							600							40
38							500							38
36														36
Rope rate 钢丝绳倍率	1													Rope rate 钢丝绳倍率

* Optional 选配

Load Chart-Jib 副臂性能表



Unit: kg

Boom angle (°) 主臂仰角	50+10.2			50+17.5			50+9*	9.5*+10.2			9.5*+17.5			Boom angle (°) 主臂仰角
	0°	15°	30°	0°	15°	30°	0°	0°	15°	30°	0°	15°	30°	
80	5500	4500	3500	3300	2400	1600	7000	3300	2600	2000	2400	1500	1200	80
78	5400	4400	3400	3200	2200	1500	7000	3200	2400	1900	2200	1400	1100	78
76	5200	4200	3300	3100	2100	1500	6800	3000	2300	1800	1900	1300	1100	76
74	5000	4000	3200	3000	2000	1400	6500	2700	2200	1700	1700	1200	1000	74
72	4800	3900	3100	2800	1900	1400	6000	2500	2100	1700	1500	1100	1000	72
70	4600	3800	3000	2700	1800	1400	5400	2300	2000	1600	1400	1100	900	70
68	4300	3600	2900	2600	1700	1300	4600	2050	1800	1500	1300	1000	900	68
66	4000	3300	2800	2400	1600	1300	3900	1800	1600	1400	1200	1000	800	66
64	3500	3000	2600	2200	1500	1300	3300	1600	1450	1200	1000	900	750	64
62	3000	2700	2400	1900	1400	1200	2800	1300	1200	1100	950	800	700	62
60	2400	2200	2100	1650	1300	1150	2400	1100	950	900	800	700	600	60
58	2000	1750	1600	1500	1200	1000	2000	800	750	700	650	600	500	58
56	1550	1450	1300	1200	1000	900	1800	600	550	500	500			56
54	1100	950	850	900	800	700	1300	500						54
52	800	700	650	600	550		1100							52
50	600	550	500				800							50
48	500						600							48
46							500							46
44														44
42														42
40														40
38														38
36														36
Rope rate 钢丝绳倍率	1													Rope rate 钢丝绳倍率

* Optional 选配

Load Chart-Jib 副臂性能表



Unit: kg

Boom angle (°) 主臂仰角	50+10.2			50+17.5			50+9*	9.5*+10.2			9.5*+17.5			Boom angle (°) 主臂仰角
	0°	15°	30°	0°	15°	30°	0°	0°	15°	30°	0°	15°	30°	
80	5500	4500	3500	3300	2400	1600	7000	3300	2600	2000	2400	1500	1200	80
78	5400	4400	3400	3200	2200	1500	7000	3200	2400	1900	2200	1400	1100	78
76	5200	4200	3300	3100	2100	1500	6800	3000	2300	1800	1900	1300	1100	76
74	5000	4000	3200	3000	2000	1400	6500	2700	2200	1700	1700	1200	1000	74
72	4800	3900	3100	2800	1900	1400	6000	2500	2100	1700	1500	1100	1000	72
70	4600	3800	3000	2700	1800	1400	5400	2300	2000	1600	1400	1100	900	70
68	4350	3600	2900	2600	1700	1300	4900	2000	1800	1500	1300	1000	900	68
66	3800	3200	2800	2400	1600	1300	4300	1750	1550	1350	1150	1000	800	66
64	3250	2800	2450	2200	1500	1300	3600	1450	1300	1150	950	900	750	64
62	2700	2450	2200	1800	1450	1200	2950	1150	1050	950	850	800	700	62
60	2150	2000	1850	1500	1250	1100	2400	950	800	750	700	650	600	60
58	1650	1500	1450	1250	1050	900	1900	750	700	650	600	550	500	58
56	1250	1150	1050	950	800	750	1500	600	550	500	500			56
54	900	750	650	700	600	550	1150							54
52	600	550	500				900							52
50	500						650							50
48							500							48
46														46
44														44
42														42
40														40
38														38
36														36
Rope rate 钢丝绳倍率	1													Rope rate 钢丝绳倍率

* Optional 选配

Safety guidelines 安全说明

<p>1 The total rated loads given in the rated load charts are the maximum lifting capacity when the crane is set up on firm and level ground, which includes the weight of the hook block and slings. The weight of above-mentioned devices should be deducted from the rated lifting load.</p>	<p>表中额定总起重量值，是在平整的坚固地面上本起重机能够保证的最大总起重量，包括吊钩和吊具的重量，所以为了估算重物重量，必须减去上述的装置重量。</p>
<p>2 The working radius shown in the rated load charts is the radius when the load is lifted off the ground, and it is the actual value including loaded boom deflection. Take boom deflection into consideration before beginning a lifting operation.</p>	<p>表中的工作幅度为起吊重物离地时起重物到起重机回转轴线的水平距离，是包括起重臂变形量在内的实际值，因而起吊前应考虑起重臂变形量。</p>
<p>3 Regarding wind speed limit, lifting operation is permissible under the load charts request: 0-32 km/h (0-20mph): Normal lifting operations 33-47 km/h (21-29mph): 40% 48 km/h (30mph) or greater: Crane operation must be shutdown</p>	<p>只允许在性能表中风速要求下作业： 瞬时风速 0-32km/h：正常吊载 瞬时风速 33-47km/h：将吊载重量降低至性能表载荷的 40% 瞬时风速 48km/h 以上：禁止吊载</p>
<p>4 Before beginning lifting operation, the operator should know the weight of the load to be lifted and its working range, and then select proper working conditions. Never operate the crane beyond the limit shown in the chart. Use the lower value from the chart when the boom length or working radius is between the range of values.</p>	<p>吊重前操作者必须对物体的重量和工作范围了解后选择合适的作业工况，严禁超出表中的数值。幅度及臂长在相邻两个数值之间时，应依据两个数值中较小值确定起重作业。</p>
<p>5 Observe the boom angle limit. Never operate the crane with the boom angle beyond the recommended limit even if a load is not being carried. Otherwise, the crane will tip.</p>	<p>应按主臂仰角范围作业，即使是空载，也不应使主臂仰角处于范围外，谨防整机倾翻。</p>
<p>6 The boom should be extended according to the telescoping code shown by digits, which means the percentage of boom sections extended.</p>	<p>表中的主臂长度应要按照每节臂的伸缩要求进行伸出。</p>



SANY GROUP CRANE BU

SANY Mobile Crane Industrial Park, No.168 Jinzhou Avenue, Jinzhou Development Zone, Changsha City, Hunan Province, P.R. China Zip 410600
Consulting sanycrane@sanygroup.com (Crane BU) / crd@sany.com.cn (IHQ)
After-sales Service 0086-400 6098 318

Reminder:

Any change in the technical parameters and configuration due to product modification or upgrade may occur without prior notice. The machine in the picture may include additional equipment. This brochure is for reference only, and goods in kind shall prevail.

Copyright at SANY. No part of this brochure may be copied or used for any purpose without written approval from SANY.

© Edited in August 2022

三一集团起重事业部

中国湖南长沙金洲开发区金洲大道 168 号 三一汽车起重机产业园 邮编: 410600
咨询: sanycrane@sanygroup.com (起重事业部) / crd@sany.com.cn (国际总部)
海外售后服务: 0086-400 6098 318

温馨提示:

由于技术不断更新, 技术参数及配置如有更改, 恕不另行通知。图中机器可能包括附加设备, 本画册仅供参考, 以实物为准。
版权为三一所有, 未经三一书面许可, 本画册任何内容不得被复制用于任何目的。

© 2022 年 8 月版

